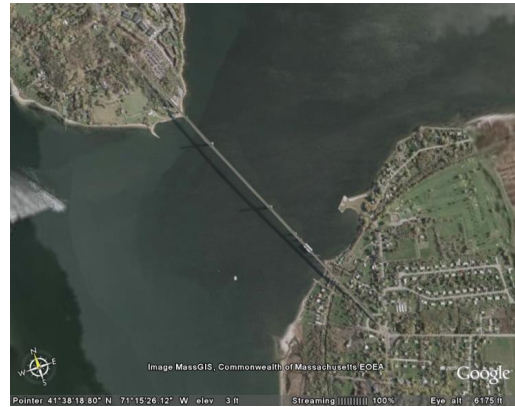
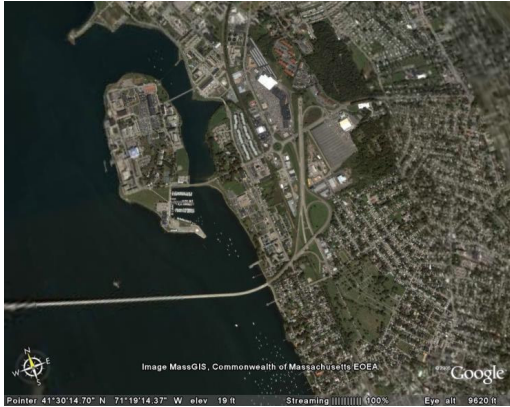


# LNG TRAFFIC IMPACT ASSESSMENT:



## NEWPORT/PELL AND MOUNT HOPE BRIDGES

SUBMITTED TO



### AQUIDNECK ISLAND PLANNING COMMISSION

321 EAST MAIN ROAD  
PORTSMOUTH, RI 02871

BY



### THE LOUIS BERGER GROUP, INC.

75 SECOND AVENUE, SUITE 700  
NEEDHAM, MA 02494

AUGUST 2005