

# Aquidneck Island Open Space Mapping Project

## Appendices



Aquidneck Island  
Planning Commission

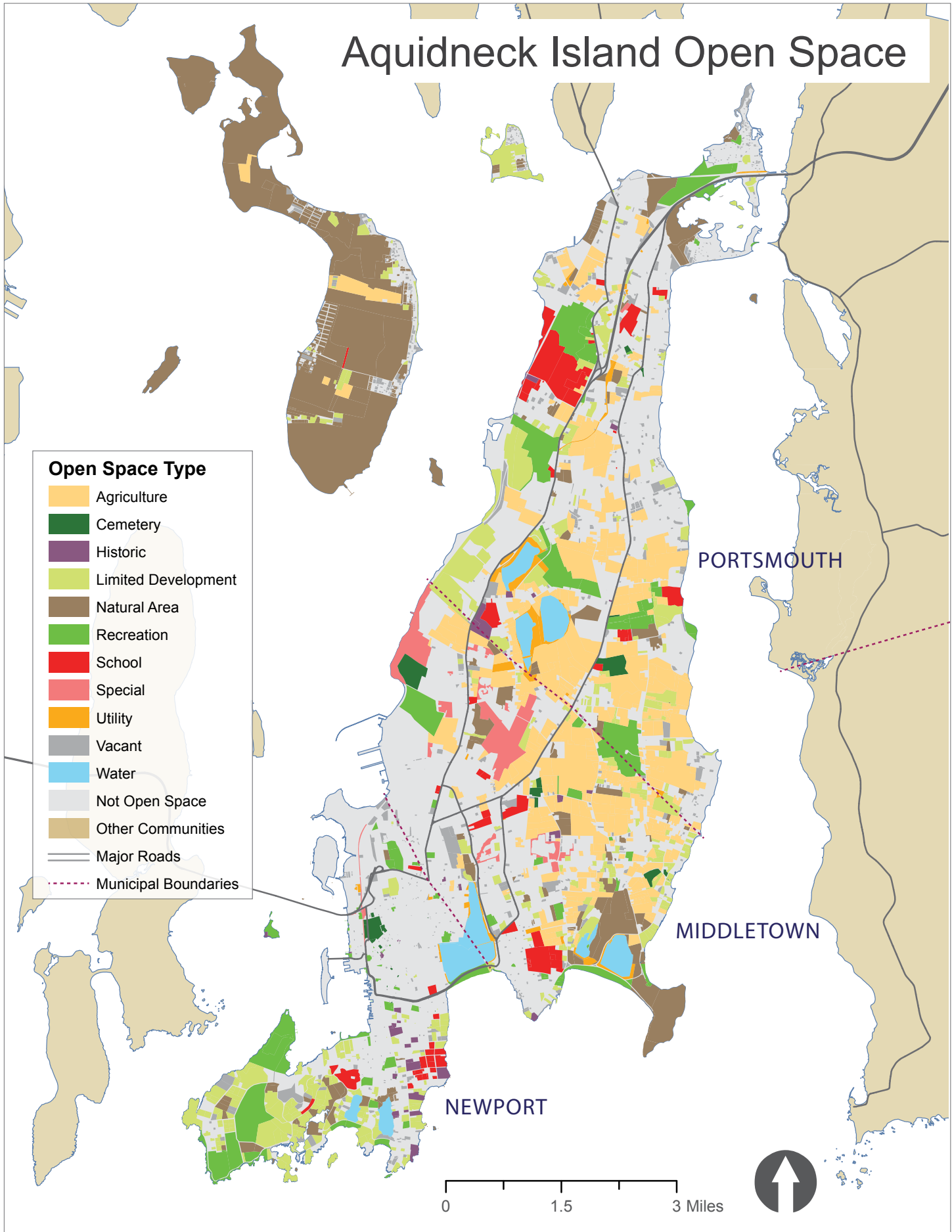
# APPENDIX A

## Open Space Maps

# Aquidneck Island Open Space

## Open Space Type

- Agriculture
- Cemetery
- Historic
- Limited Development
- Natural Area
- Recreation
- School
- Special
- Utility
- Vacant
- Water
- Not Open Space
- Other Communities
- Major Roads
- Municipal Boundaries



PORTSMOUTH

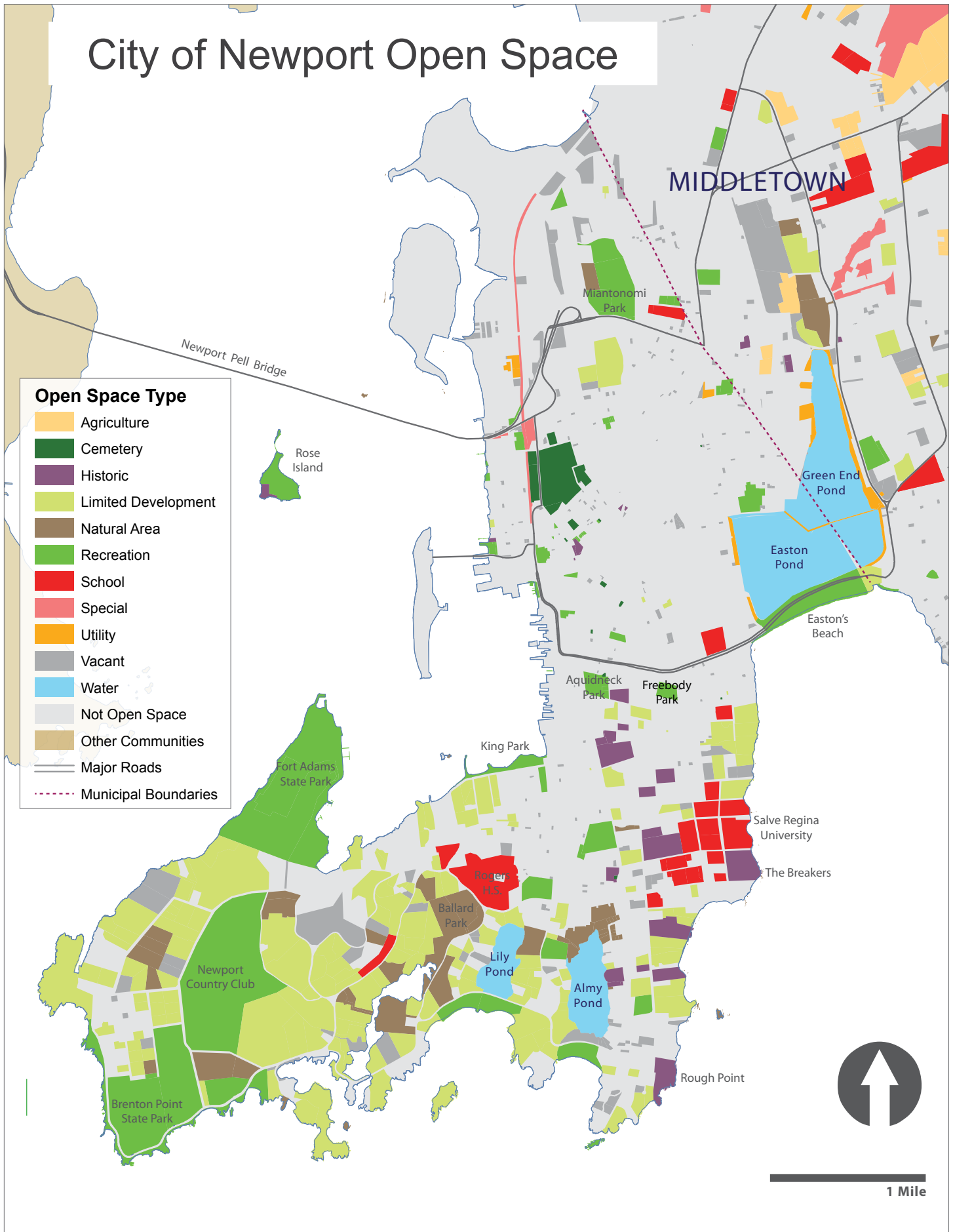
MIDDLETOWN

NEWPORT

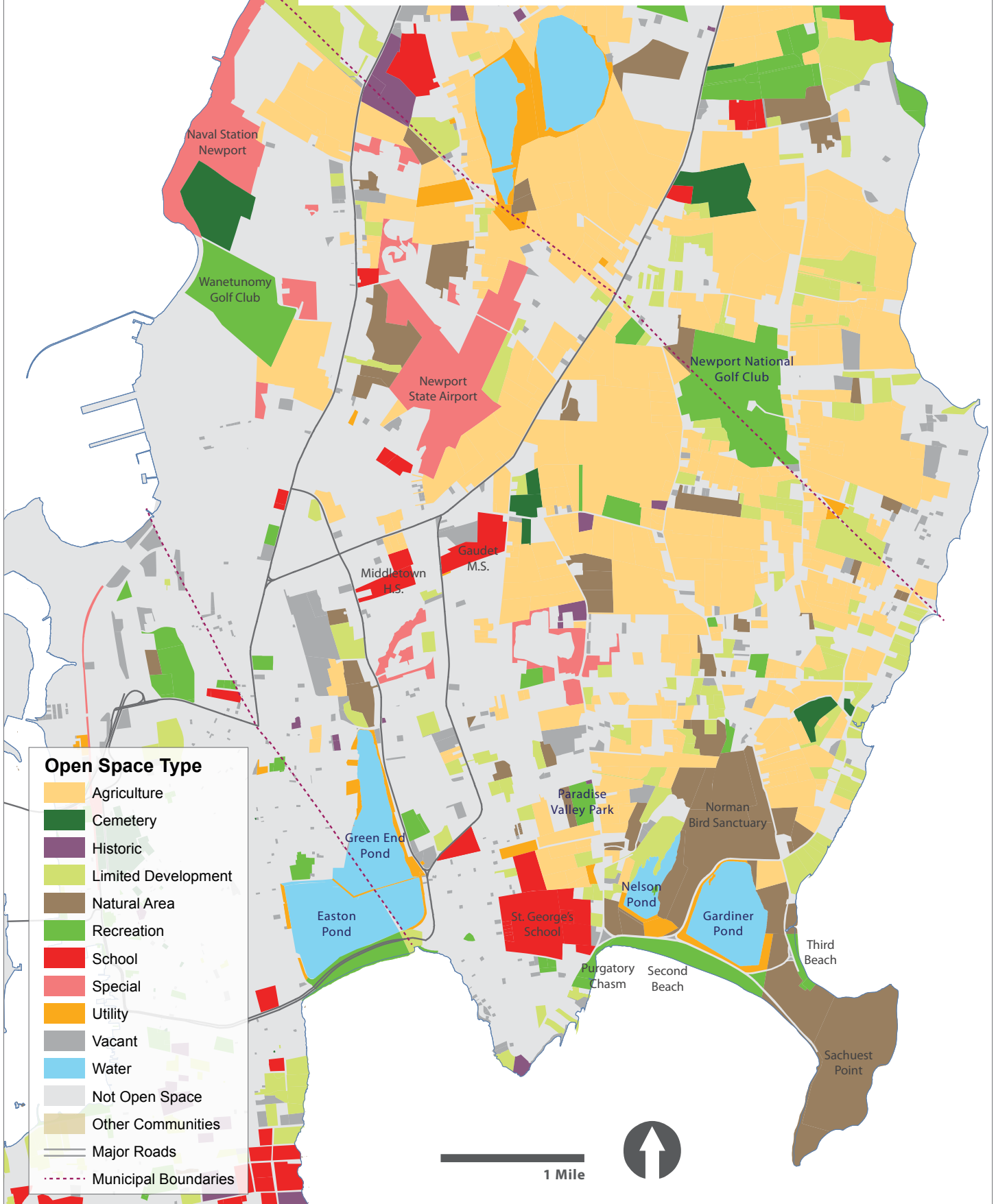
0 1.5 3 Miles



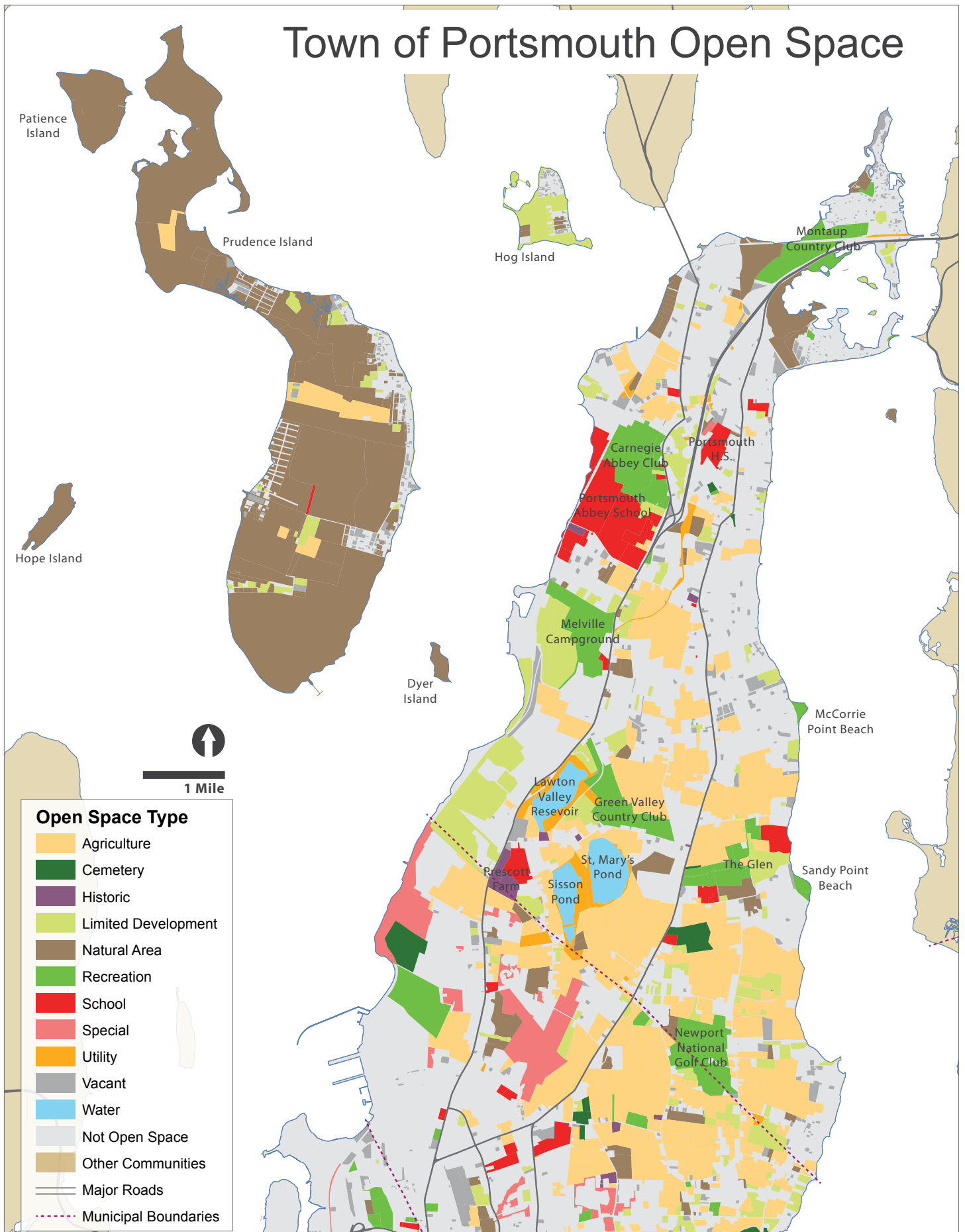
# City of Newport Open Space



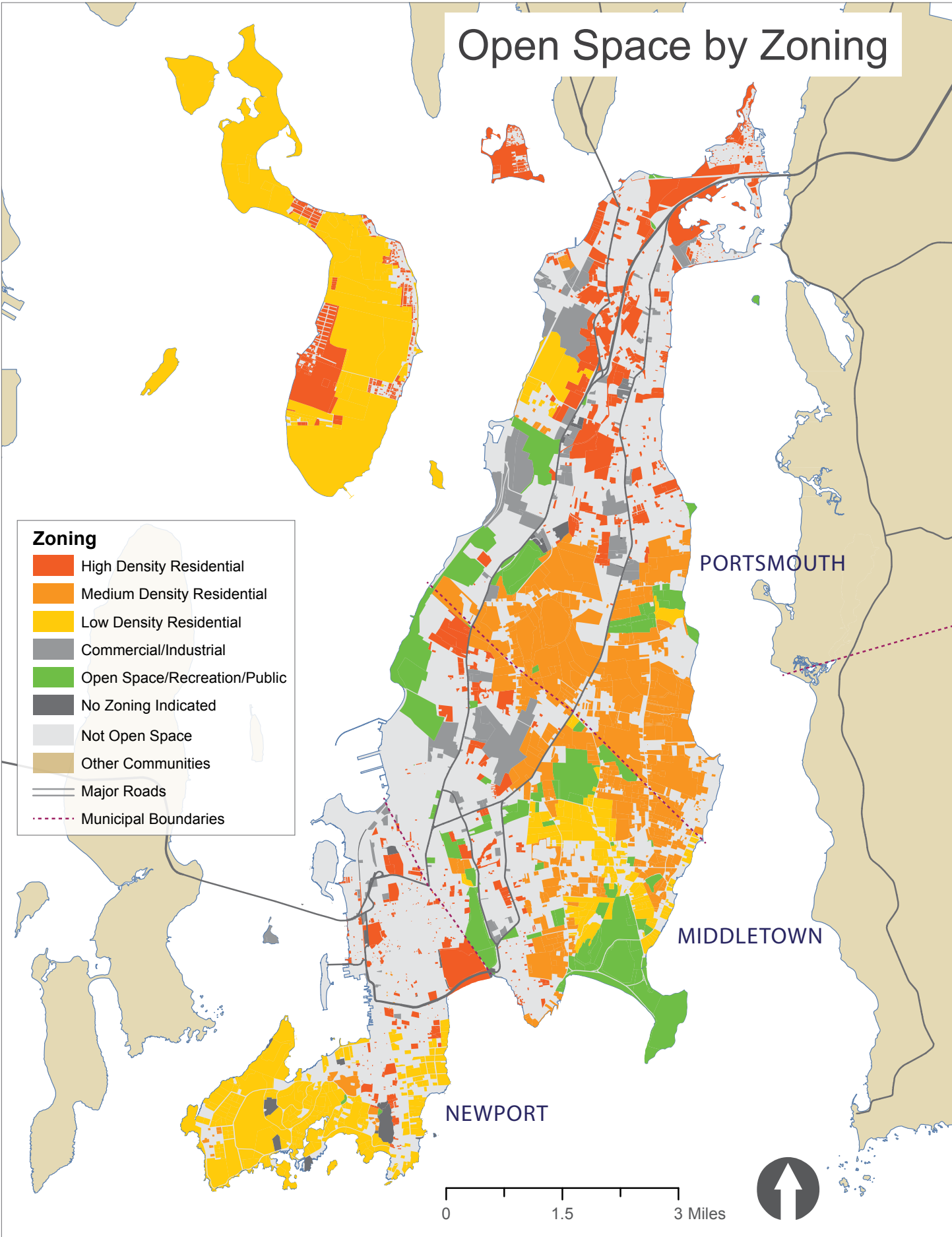
# Town of Middletown Open Space



# Town of Portsmouth Open Space



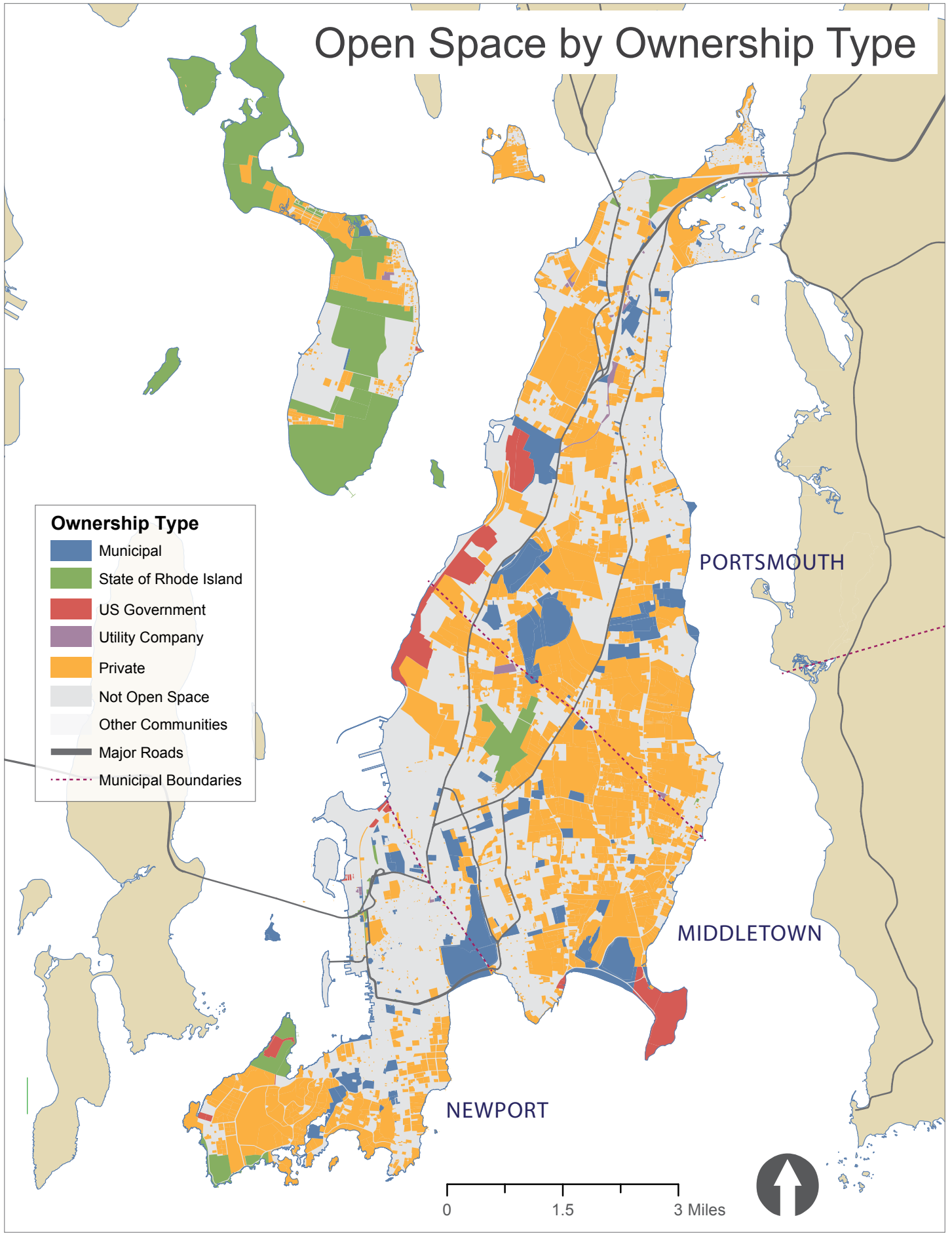
# Open Space by Zoning



# Open Space by Ownership Type

**Ownership Type**

- Municipal
- State of Rhode Island
- US Government
- Utility Company
- Private
- Not Open Space
- Other Communities
- Major Roads
- Municipal Boundaries



# APPENDIX B

## Detailed Methods

# DETAILED METHODS

## Open Space Identification and Categorization

Isolate open space area from the Rhode Island Geographic Information System (RIGIS) Land Use layer and overlay on the municipal real estate parcels.

Assign a general open space type based on RIGIS Land Use layer.

Use Rhode Island Department of Environmental Management (RIDEM) conserved land layer to isolate federal, state, and local parks and recreation areas (public open space areas).

Use municipal resources, including assessment data and existing open space studies to identify these publically-owned open space areas.

Use assessment data and state records to identify open space in use for education, historic, utilities, and cemeteries.

Use buildings and impervious surface layers to identify vacant lots (no buildings or impervious) and limited development areas (less than 5% coverage).

Use RIDEM conserved land layers to identify conserved parcels.

Perform a visual check, using 2008 orthography to determine the accuracy of the categorization, paying special attention to those labeled as agriculture, vacant, limited development, or natural area.

Create consolidated spatial/attribute files for each municipality.

## Susceptibility Analysis

Identify state, municipal, and other data necessary to create raster GIS layers based on the eight susceptibility criteria.

Prepare raster layers, using fifty meter cell as the base. For those criteria related to distance, use the ArcGIS straight line distance function to create layers. For those dealing with proximity, use the program's density function to create the layers.

Reclassify each of the criteria layers so that every cell has a value of 1, 2, or 3, where 1 corresponds to areas that are least susceptible to change and 3 to areas most susceptible to change.

Combine the eight reclassified layers into a single grid. Reclassify the combined layer so that it too is scored on a scale of 1 – 3.

Overlay the municipal real estate parcel layers onto the final susceptibility grid, and use the ArcGIS zonal statistics function to assign a score to each parcel.

Adjust final parcel scores so that areas where change is very unlikely such as water bodies or permanently conserved land have low susceptibility scores.

APPENDIX C  
Data Access Policy

# DATA ACCESS POLICY

## **Data Access Policy**

### *AIPC*

AIPC will retain the original maps, data tables, etc. produced through the open space mapping project. It will use the maps, data, etc. for further analyses as needed. The final project reports and maps will be available on AIPC's website and by request.

### *Municipalities*

AIPC will provide the municipalities with copies of the final project report and maps as well as the spatial/tabular parcel data produced through the project. AIPC leaves it to the municipalities to decide how to distribute and make available this data.

### *Advisory Committee Members*

AIPC will provide copies of the final project report and maps to members of the advisory committee.

### *Other Government Agencies*

Upon request, AIPC will provide copies of the final project report and maps to members of local, state, and federal government agencies.

### *Private Groups and Individuals*

Upon request, AIPC will provide copies of the final project report and maps to members of the public.

## Image Credits

The Breakers  
Flickr.com user TheBreakers

Touro Park  
Flickr.com user Wally Gobetz

Norman Bird Sanctuary  
Flickr.com user G.E. Long

Sandy Point  
Flickr.com user Duluoz Cats

Purgatory Chasm  
Flickr.com user Sandy Richard

Newport Vineyards  
Flickr.com user Eric F. Savage

Almy Pond  
Flickr.com user Juan Carlos Cruz

Eisenhower Park  
Flickr.com user Wally Gobetz

The Glen  
Flickr.com user my\_southborough

Brenton Point  
Flickr.com user Doug Kerr

Green Animals Topiary Garden  
Flickr.com user Dhananjay Odhekar

Easton Beach  
Flickr.com user Parl

Prudence Island  
Flickr.com user Ian Westcott

Sachuest Point  
Flickr.com user Sarah Parrott

Prescott Farm  
Flickr.com user Susteph